

R-Buster Hand Stamps

- Twice the size of heavy duty hand stamps: **5" Long!**
- Easy gripping (no two finger pinching required)
- Double pass engraved for extra clarity
- C custom heat treat for long life
- Easy alignment of characters with tapered bevels
- Soft hammer end to reduce chipping



**All Character
Face Styles**



EDM

CMT Engraved

Multi character is our specialty!

Multi-character stamps are useful for marking repeated numbers such as part numbers.

Please specify character size and number of characters as shown below. Include description of special font, character face, or logos required.

Hand Stamp Size Chart					
Character Size	Shank Dimensions	Overall Length	Part Number	Example	
1/16	1/4	5	CMH06-	CMH06-C#-XXX Where C# is the number of characters, and XXX is the characters	
3/32	5/16	5	CMH09-		
1/8	5/16	5	CMH13-		
5/32	3/8	5	CMH16-		
3/16	3/8	5	CMH19-		
1/4	7/16	6	CMH25-		
5/16	1/2	6	CMH31-		
3/8	9/16	6 1/2	CMH38-		
1/2	3/4	7	CMH50-		

Custom Hand Stamps

- Your own special design can be easily reproduced by furnishing us with a sketch.
- Symbol marking cannot be confused with any other marking, each stands out distinctively.
- All stamps available in low stress dot style or semi ball face design.

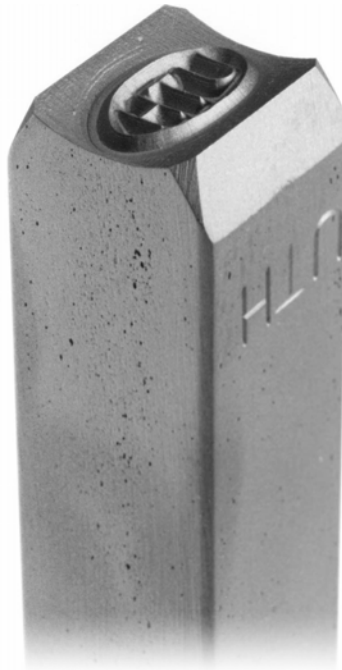


Symbols and other special hand stamps are used for:

- Quality control in marking machine
- Inspection
- Testing operations



Logos are useful for permanently marking company information.



Custom hand stamps can be manufactured with:

- straight
- curved
- concave (shown right)
- convex on the letter face.

Fax or E-mail logo or artwork to 586.949.8401 or info@columbiamt.com