

A blue triangle pointing to the right, containing a graphic of several interlocking gears of various sizes. The gears are rendered in shades of blue and white, with some appearing to be in motion or highlighted. The background of the triangle is a dark blue with a grid pattern.

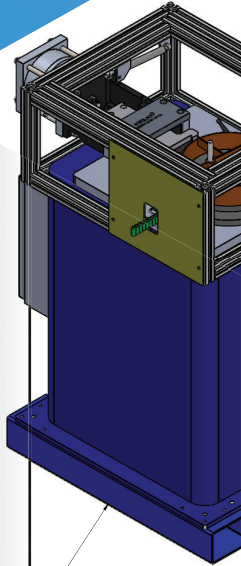
HIGH SPEED ROLL MARKING

A close-up photograph of several metal marking rolls. The rolls are cylindrical and have a dark, metallic finish. They are arranged in a cluster, with some in the foreground and others in the background. The rolls have various markings and text on them, including 'WRS CR-V12' and 'RS CR'. The lighting is dramatic, highlighting the texture and contours of the metal.

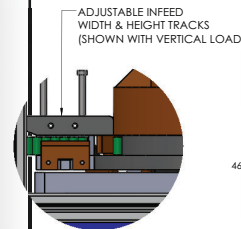
**Model 71 Technical Brochure
Socket Marker**

“High production flywheel dial drive with height adjustment production speeds up to .5/sec Part to Part”

- Heavy cast iron housing with fork pockets and tooling shelf
 - Fixed machine guard with access door
 - Inverter duty drive motor 240V
 - Breakaway jam protection clutch
 - Heavy duty Boston worm gear drive
 - Adjustable infeed and outfeed guide tracks
- dedicated or variable product options
- Machine control box with Ethernet IP for connection to main customer PLC, operator controls start, stop, speed and E-stop



HEAVY DUTY STEEL MACHINE BASE WITH FORK POCKETS AND TOOLING SHELF



ADJUSTABLE INFEEED WIDTH & HEIGHT TRACKS (SHOWN WITH VERTICAL LOAD)

CMT

**Columbia
Marking
Tools**

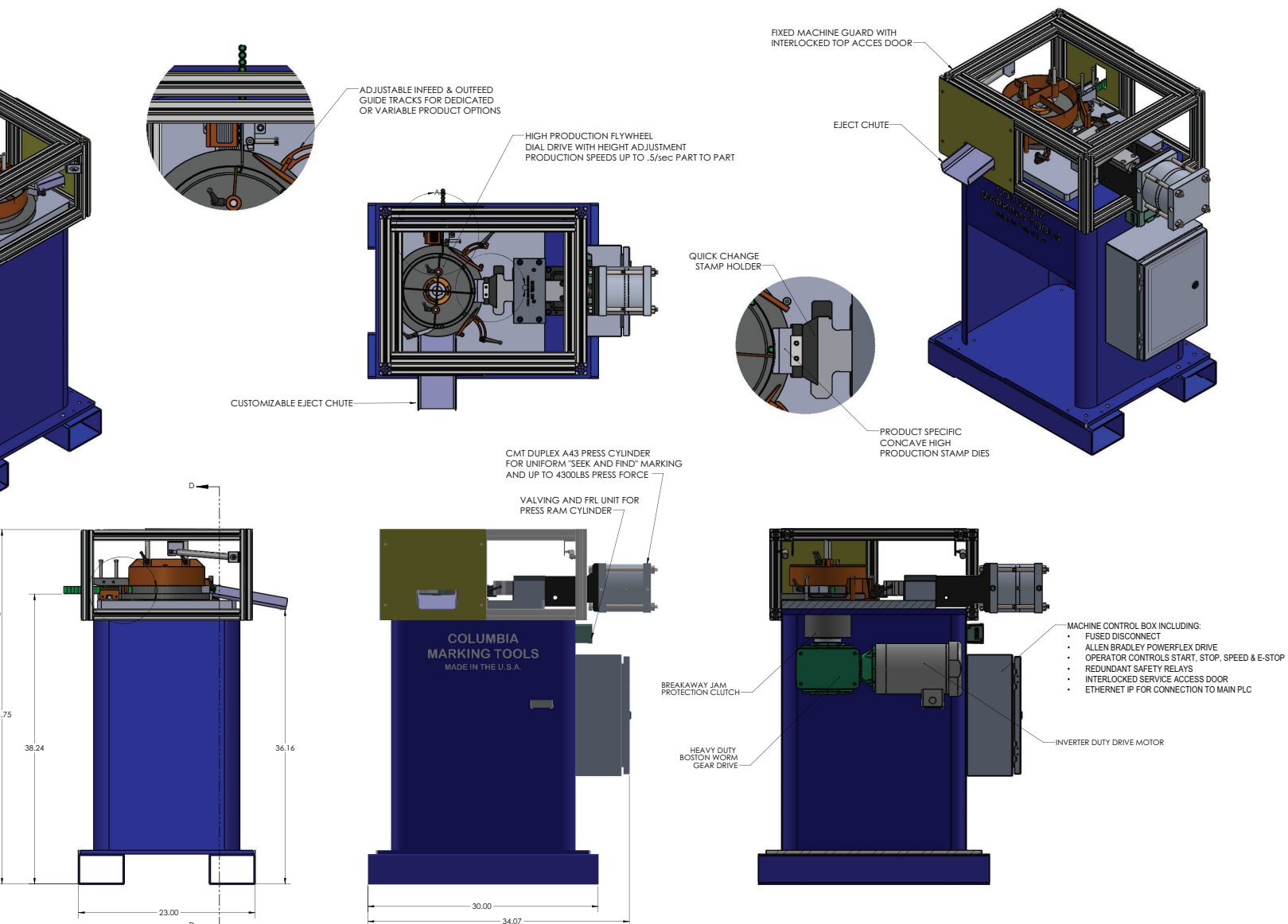


- 4300 lbs. press force ram with FRL unit
- Heavy duty floor style machine base with fork cooling shelf
- Guarding and interlocked top

0.480vac

s for

“Classic industrial roll marking by Columbia Marking Tools”



Made in USA by

Columbia Marking Tools

27430 Luckino Dr
Chesterfield, MI 48047
USA

586.949.8400 - www.marking-machines.net

More Information



CMT
Columbia
Marking
Tools



www.columbiamt.com