



Radial Type Holder

Technical Data Sheet

CMT COLUMBIA
MARKING
TOOLS

Contents

General Description.....	1
Applications.....	1
Tool Components.....	2
Elements of Design.....	3
Radial Type.....	3



General Description

The radial type holder retains steel type in a circular pattern. The holder can mark flat surfaces with characters in an arch or circular path.

Applications

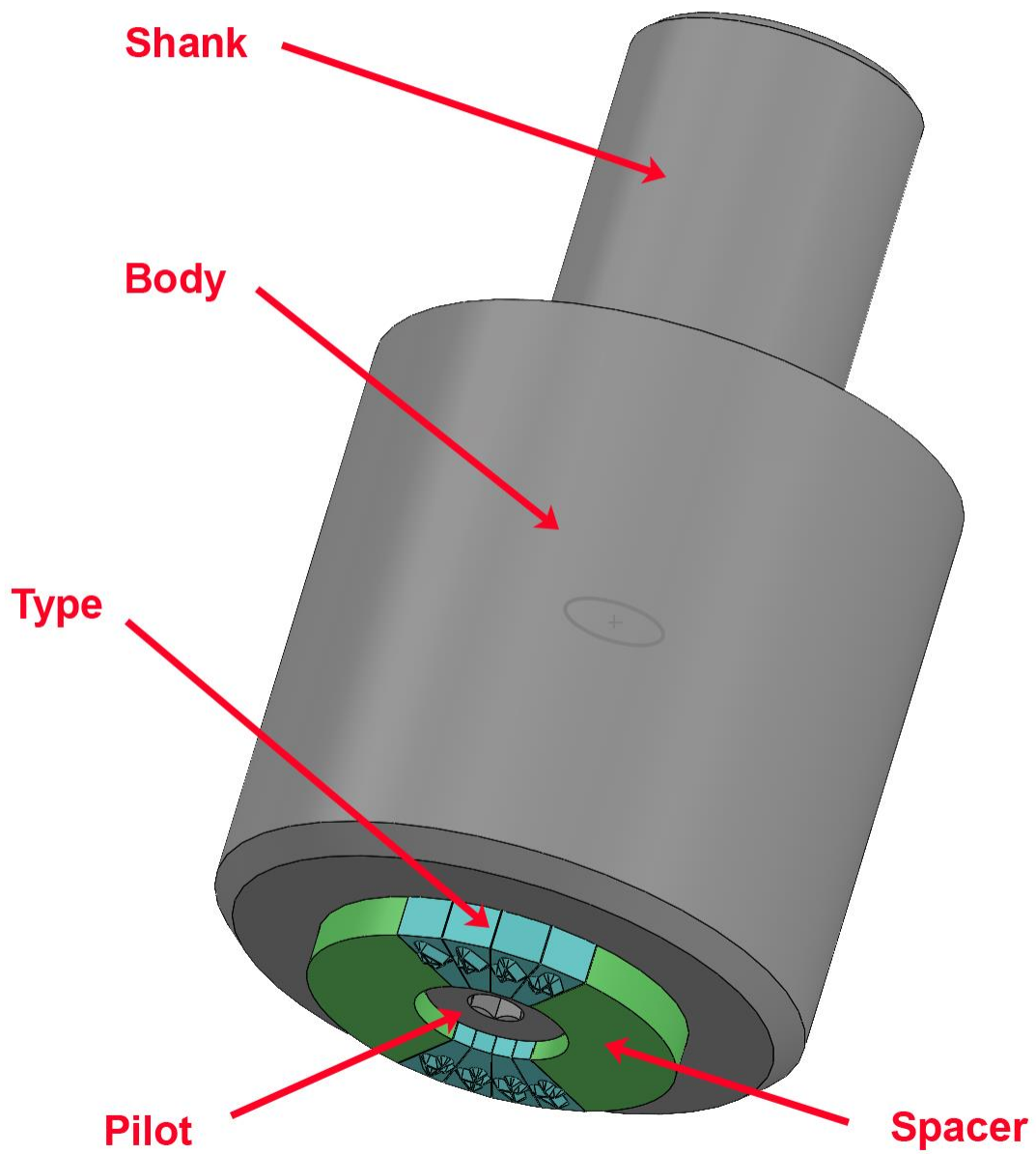
This specially designed holder and type are used for applications with the following requirements:

- Constant marking legend or changed daily
- Flat surface
- Fast mark
- Low cost, as compared to dot-peen or laser marks.

Ideal Parts for Radial Marking

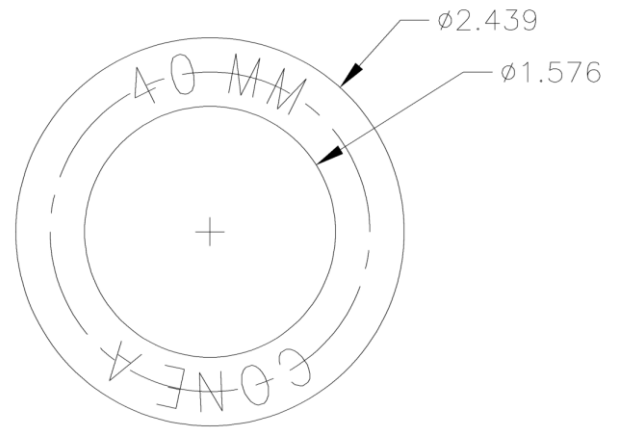
- Gear Blanks
- Pulleys
- Shafts
- Bearings
- Wheels
- Bushings
- Shell Casings

Tool Components

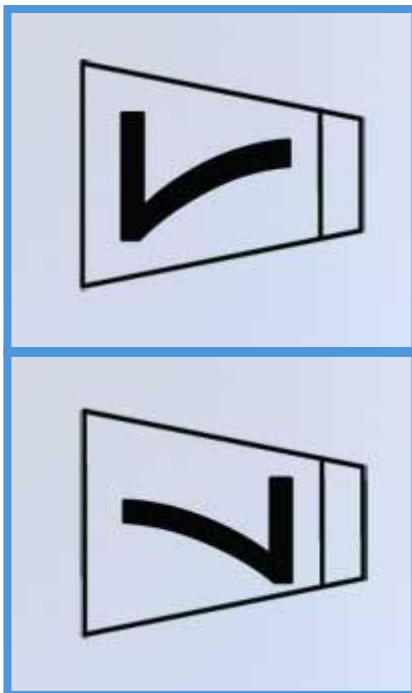


Elements of Design

1. Character size
2. Radius to center of character, or a maximum and minimum diameter for the marking.
3. Number of characters
4. Shank Diameter (SA) and length (SL)
5. Pilot Diameter (PA) and depth (PL)
6. Number of type required and readings of multi-character stamps
7. Number of spacers required



Radial Type



CMRA

Style: Base of character is toward the center of the radius.

CMRB

Style: Base of character is away from the center of the radius.

All radial type holders and type are custom designed.

During the design process an approval drawing is sent for review prior to release for manufacturing.

