



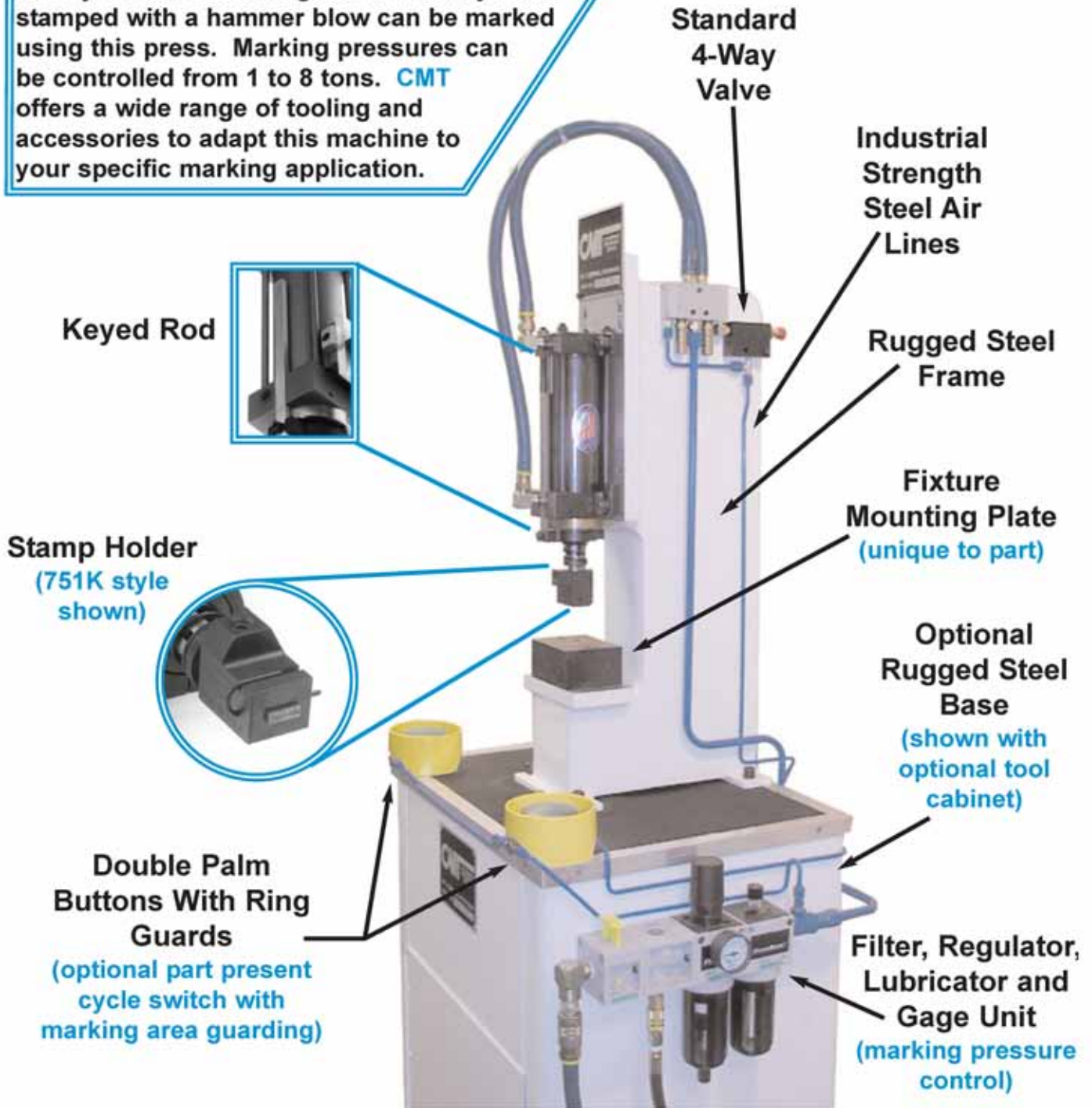
COLUMBIA MARKING TOOLS

PR751 SLIDE-A-MARK™ Machine UP TO 10 TONS Marking Force

PR 751 Impact Press

A truly versatile marking machine. Any mark stamped with a hammer blow can be marked using this press. Marking pressures can be controlled from 1 to 8 tons. CMT offers a wide range of tooling and accessories to adapt this machine to your specific marking application.

visit www.columbiamt.com for complete product line



COLUMBIA MARKING TOOLS

27430 Luckino
Chesterfield, MI 48047

TEL: 586.949.8400
FAX: 586.949.8401



PR751

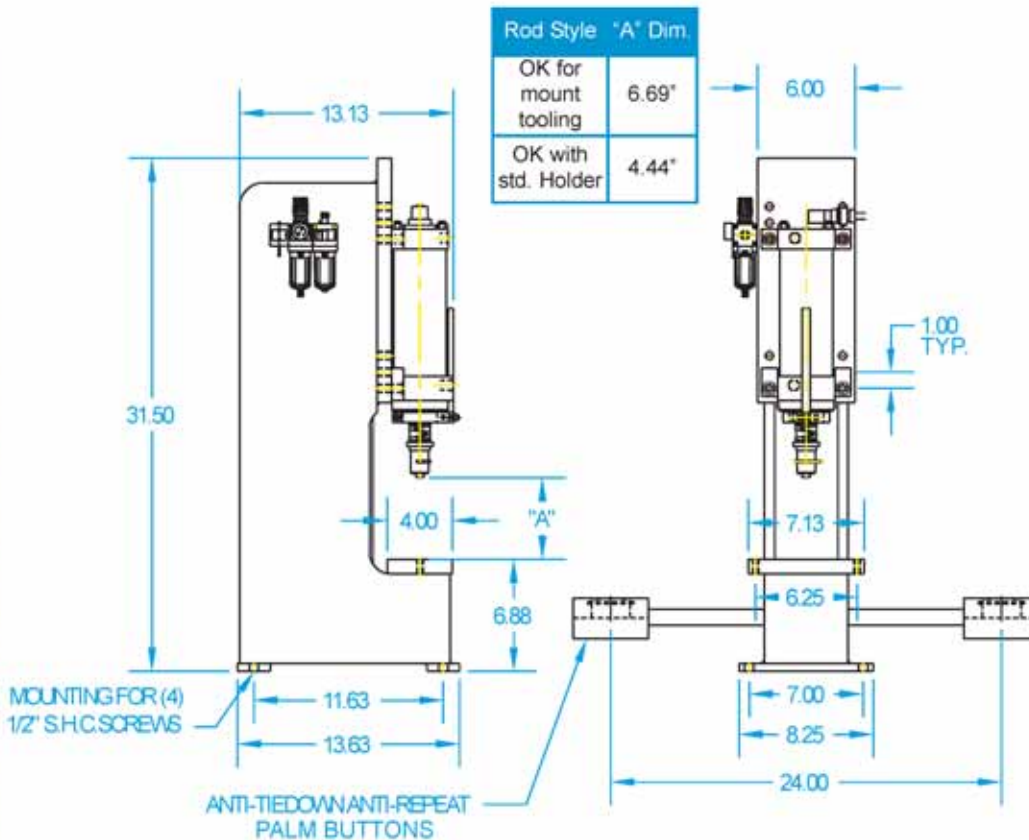
Impact Marking Press

A NOTE ABOUT STAMPING PRESSURE:

The impact pressure required for a metal marking application is dependent on three variables:

1. Character Size
2. Material Being Marked
3. Number of Characters

Please provide this information when requesting a quotation on one of CMT's impact presses.



OPTIONAL EQUIPMENT:

- XY Positioning Tables
- Manual & Air Powered Slide Feed Fixture
- All Air or Air/Electric Control Systems
- Rotary Tables
- Pre-Determining Digital Counter
- Part Present Cycle Start
- Feeder Bowls
- Auto-Feed & Eject Systems
- Assembly (Staking) Operations
- Vision Systems
- Numbering Heads
- Safety Enclosures
- Light Curtain Safety Systems
- Custom Machine Bases

SAMPLE MARKS:

Rough Surfaces



Radial Marks

Raised Character Mark



Un-Even Surfaces

Visit www.columbiamt.com for complete product line

COLUMBIA MARKING TOOLS

27430 Luckino
Chesterfield, MI 48047

TEL: 586.949.8400
FAX: 586.949.8401



PR751 Impact Marking Press

CMT offers 2 standard complete bench style machine packages for the PR751 impact marking system:

Basic Model PR751 includes:

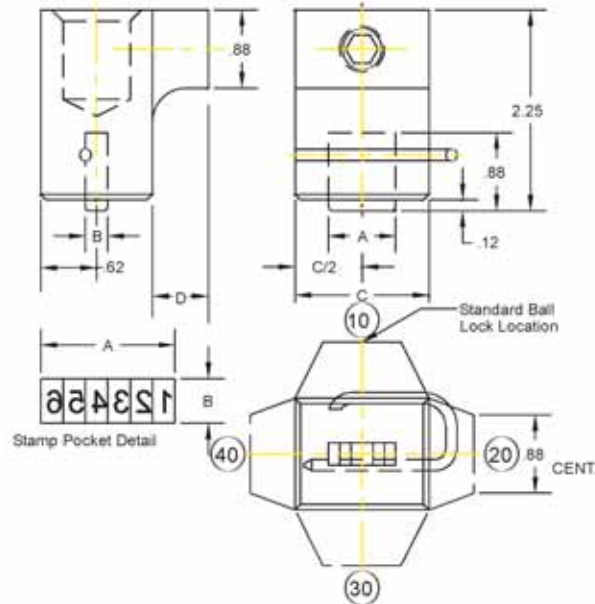
- Heavy duty, steel, bench top frame
- Double acting pneumatic press†
- Keyed non-rotating rod
- **SLIDE-A-MARK™** automatic air impact marker
- Air valve
- Air filter, pressure regulator, lubricator, and OSHA required, air shut-off valve with lockout
- Dual, anti-tie down, anti-repeat, palm buttons
- Choice of mounting style for tooling

Deluxe Model PR751-D includes:

- Heavy duty, steel, bench top frame
- Double acting pneumatic press†
- Keyed non-rotating rod
- **SLIDE-A-MARK™** automatic air impact marker including non-lube feature
- Air valve
- Air filter, pressure regulator, and OSHA required air, shut-off valve with lockout
- *Ergonomic, touch-less, electric, dual, anti-tie down, anti-repeat palm buttons*
- Choice of mounting style for tooling

751K style Holders:

Quick-change stamp holders can be mounted and removed in seconds for fast, simple legend changes. Standard 751K holders use CMG-step style steel type. (See page 4)



‡Press Standard Options
Stroke Length Options of:
2 1/2", 4", or 6"
Pressure Options: 6, 8, or 10 tons



Part Number	Character Size/Quantity					Dimensions		
	1/16	3/32	1/8	3/16	1/4	A	B	C
751KA-50-**	8	5*	4	2*		.50	.25	1.5
751KA-75-**	12	8	6	4		.75	.25	1.5
751KA-100-**	16	10*	8	5*		1.0	.25	2.25
751KA-150-**	24	16	12	8		1.5	.25	2.25
751KA-200-**	32	21*	16	10*		2.0	.25	3.25
751KA-250-**	40	26*	20	13*		2.5	.25	3.25
751KB-75-**				4†		.75	.31	1.5
751KB-150-**				8†		1.5	.31	2.25
751KB-200-**				10†		1.88	.31	3.25
751KB-225-**				12†		2.25	.31	3.25
751KC-100-**					4	1.0	.38	2.25
751KC-200-**					8	2.0	.38	3.25

*Requires a spacer to fill pocket
**Specify ball lock position in model number i.e. 751KA-50-20
† Require CMG16W Stamp inserts

visit www.columbianmt.com for complete product line



PR751

Impact Marking Press

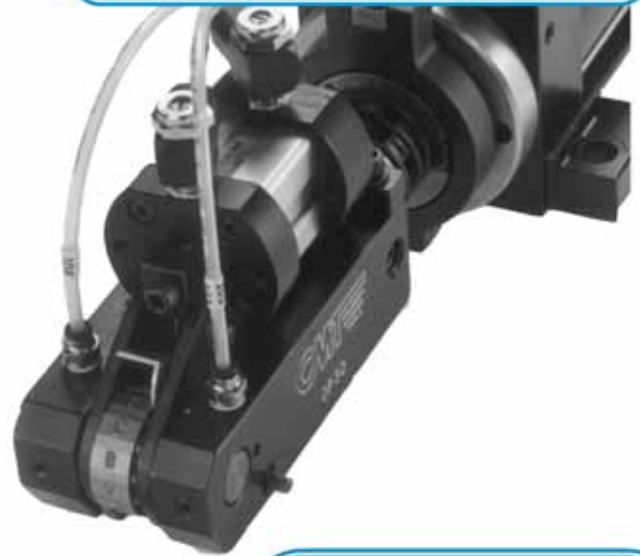
Numbering Heads

Columbia Model 123K(automatic) and 130K(non-automatic), numbering heads, available tooling options for the PR751, are engineered for durability and high quality marking in industrial conditions.

Our Numbering Heads Feature:

- Choice of Manual or Automatic Wheels
- K-Style Mounting for SLIDE-A-MARK™
- A Patented Pawl System That Allows Easy Setting and Positive Character Alignment
- Character Sizes From 1/16" to 1/4"
- Sturdy "No Flex" Frames
- Positive Mark Verification System (shown)
- Numbering Head Actuator Available
- Ask About Our Special Julian Date Coding Method**

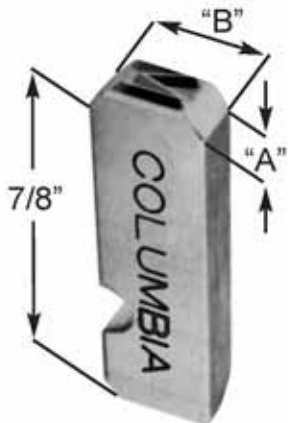
Ready To Mount On Any Model 751



Model 1023 Remote Select Numbering Head

visit www.columbiamt.com for complete product line

Steel Type



Made From Wear Resistant Tool Steel, and Heat Treated In-House, These High Quality Stamp Inserts Stand Up Best Under High Production Marking Conditions

Custom Type Sizes And Multi-Character Dies Available Upon Request



- Custom Dies Available**
- *logos
 - *multi-character dies
 - *symbols
 - *special lengths
 - *extra flat face

Char. Size	A	B	Catalog No.
1/16	1/16	1/4	CMG06-
3/32	3/32	1/4	CMG09-
1/8	1/8	1/4	CMG13-
3/16	3/16	5/16	CMG19-
1/4	1/4	3/8	CMG25-

To Order:

Add Suffix Of Actual Letter or Figure To Catalog Number



COLUMBIA MARKING TOOLS

27430 Luckino
Chesterfield, MI 48047

TEL: 586.949.8400
FAX: 586.949.8401