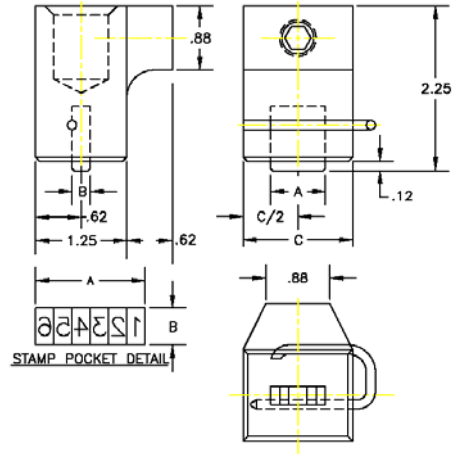


Slide-A-Mark™ K Style Quick Change Holders



Quick change holders are used on the rod style K. These holders allow for marking of larger legends. They are quickly removed by loosening a set screw. To assure the fastest changeover time, have a spare holder preset with the new marking legend.



| Item Number | "A" | "B" | "C" | 1/16" | 3/32" | 1/8" | 5/32" | 3/16" | 1/4" |
|-------------|------|------|------|-------|-------|------|-------|-------|------|
| 751KA5010 | 0.50 | 0.25 | 1.50 | 8 | (5) | 4 | - | - | - |
| 751KA7510 | 0.75 | 0.25 | 1.50 | 12 | 8 | 6 | - | - | - |
| 751KA10010 | 1.00 | 0.25 | 2.25 | 16 | (10) | 8 | - | - | - |
| 751KA15010 | 1.50 | 0.25 | 2.25 | 24 | 16 | 12 | - | - | - |
| 751KA20010 | 2.00 | 0.25 | 3.25 | 32 | (21) | 16 | - | - | - |
| 751KA25010 | 2.50 | 0.25 | 3.25 | 40 | (26) | 20 | - | - | - |
| 751KB7510 | 0.75 | 0,31 | 1.50 | - | - | - | 4 | 4 | - |
| 751KB15010 | 1.50 | 0.31 | 2.25 | - | - | - | 8 | 8 | - |
| 751KB20010 | 1.88 | 0.31 | 3.25 | - | - | - | 10 | 10 | - |
| 751KB22510 | 2.50 | 0.31 | 3.25 | - | - | - | 12 | 12 | - |
| 751KC10010 | 1.00 | 0.38 | 2.25 | - | - | - | - | - | 4 |
| 751KC15010 | 1.50 | 0.38 | 2.25 | - | - | - | - | - | 6 |
| 751KC20010 | 2.00 | 0.38 | 3.25 | - | - | - | - | - | 8 |

*Numbers in () require additional spacer to fill pocket

Floating holder option (as shown at right) will adjust for slight variances in the marking surface. These are available on K style Holders and the CMM adapters.

| Part Number | Drawings available upon request |
|--------------|--|
| 751KXFL###10 | X and ## = Character and number from table above. Floating holder will have same type capacity but dimensions will vary |

Adapters are available for CMM retainers. For more information on CMM please see complete catalog. Drawings available upon request.

| Part Number | Includes CMM retainer and stamps |
|--------------|--|
| 751KFLP8210A | CMM101 retainer and CMM103 stamps |
| 751KFLR4240A | CMMR18R1900 retainer and CMM018 stamps |



Floating Holder Adapter and Retainer

- Excellent for Sheet Metal Marking