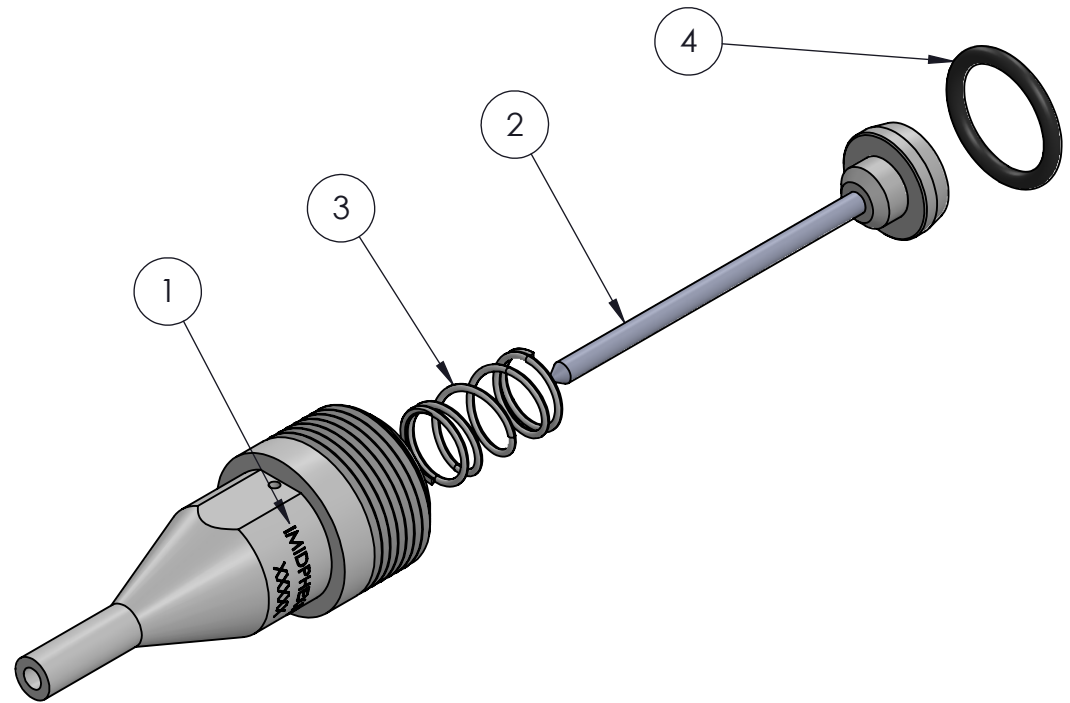
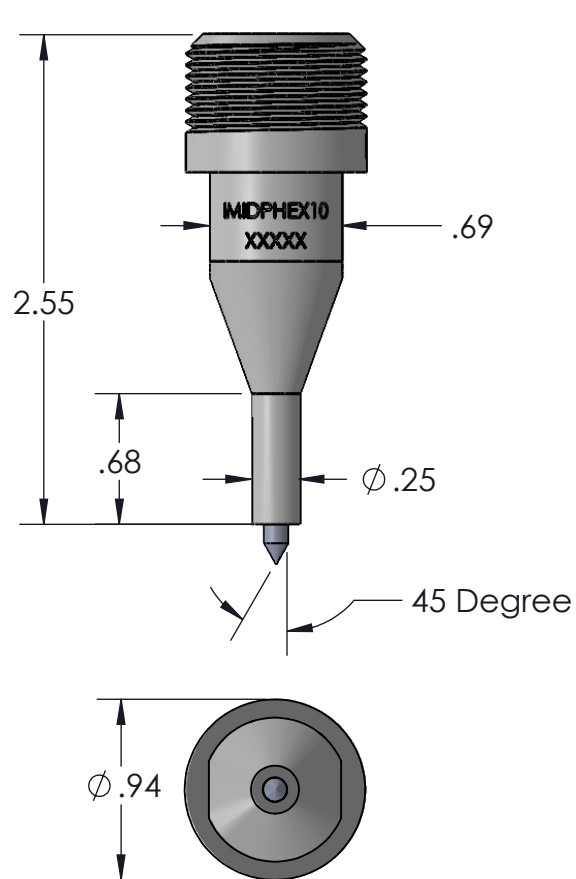


ITEM NO.	PART NUMBER	DESCRIPTION	QTY.	VENDOR
1	IMIDPHEX10	EXTENDED PIN HOUSING	1	C.M.T.
2	IMIDPINEX10	EXTENDED PIN ASSEMBLY	1	C.M.T.
3	IMIDSPRING	SPRING	1	C.M.T.
4	IMIDORING	PISTON BUMPER	1	C.M.T.



UNLESS OTHERWISE SPECIFIED:		NAME	DATE	<div><div>CMT</div><div>COLUMBIA MARKING TOOLS</div><div>27430 LUCKINO DRIVE CHESTERFIELD, MI 48047</div></div>		
DIMENSIONS ARE IN INCHES TOLERANCES: FRACTIONAL ± ANGULAR: MACH ±    BEND ± TWO PLACE DECIMAL    ± THREE PLACE DECIMAL    ±	DRAWN	JJS	08/2020			TITLE:
	CHECKED					IMIDPHEX10-XX 1.0" EXTENDED MARKNIG PIN ASSEMBLY C.M.T. STANDARD
	ENG APPR.					
	MFG APPR.					
Q.A.						
INTERPRET GEOMETRIC TOLERANCING PER:	<div>PROPRIETARY AND CONFIDENTIAL</div> <div>THE INFORMATION CONTAINED IN THIS DRAWING IS THE SOLE PROPERTY OF COLUMBIA MARKING TOOLS. ANY REPRODUCTION IN PART OR AS A WHOLE WITHOUT THE WRITTEN PERMISSION OF COLUMBIA MARKING TOOLS IS PROHIBITED.</div>			SIZE	DWG. NO.	REV
MATERIAL				A	IMIDPHEX10-XX	B
FINISH						
DO NOT SCALE DRAWING						
				SCALE: 1:1	WEIGHT:	SHEET 1 OF 5

REVISIONS				
ZONE	REV.	DESCRIPTION	DATE	APPROVED
	A	INITIAL PRINT RELEASE	06/2020	JJS
	B	REVISED TOLERANCE ADDED FINISH ON PIN HOLE AND INCREASED TO .127" FOR POST FINISHING	7/2022	AJH