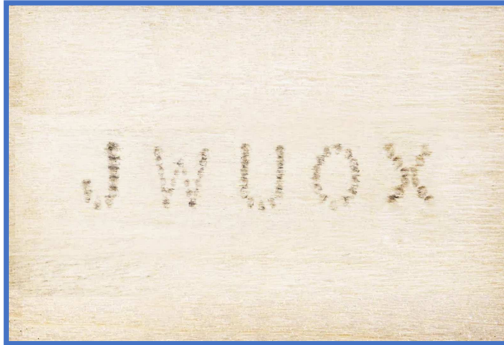


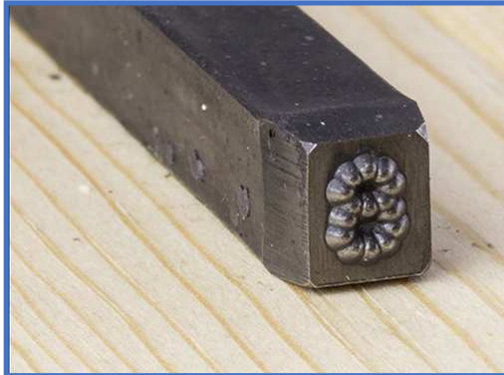
### Round Face Dot Style Hand Stamps

For use in aircraft, missile, oil supply and nuclear power industries and other applications where **lowest stress impressions are critical**. Round face-dot design eliminates risk of fracture from too sharp an impression.

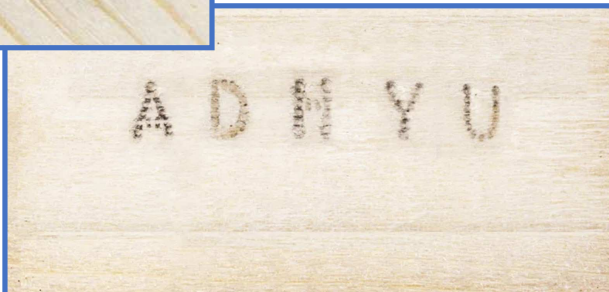


The rounded dots work with two processes to provide a “softer” low stress impact.

- 1) The reduced surface area of using dots to create the characters required less force to mark. This is due to the reduced surface area of the character.
- 2) The second process is the rounded characters which eliminate the chiseled point impact of standard sharp face characters. The round character provides a blunt force resulting in reduced fractures.



The standard CMJ-DOT style hand stamps are available as letter and number sets and individual characters.



CMT offers multicharacter hand stamps with the Dot style face in the R Buster brand.

### Letter Sets

27 characters are included in the letter set. These are all the letters from A through Z, and the &, ampersand.

Item Code	Character Size	Weight (lbs)	Shank Size	Length
CMJ13DOTAZ	1/8"	2-1/4	5/16"	2-1/2"
CMJ19DOTAZ	3/16"	3	3/8"	2-3/4"
CMJ25DOTAZ	1/4"	4-1/2	7/16"	3"
CMJ38DOTAZ	3/8"	8	9/16"	3-1/8"
CMJ50DOTAZ	1/2"	18-1/2	3/4"	3-3/4"



### Number Sets

9 figures are included in the number set. The figures 0 through 8. The number 6 and 9 are the same die.

Item Code	Character Size	Weight (lbs)	Shank Size	Length
CMJ13DOT08	1/8"	3/4	5/16"	2-1/2"
CMJ19DOT08	3/16"	1	3/8"	2-3/4"
CMJ25DOT08	1/4"	1-1/2	7/16"	3"
CMJ38DOT08	3/8"	2-1/2	9/16"	3-1/8"
CMJ50DOT08	1/2"	6-3/4	3/4"	3-3/4"

### Combination Letter and Number Sets

36 stamps are included in the combination letter and number set. These include all of the characters letter and numbers sets.

Item Code	Character Size	Weight (lbs)	Shank Size	Length
CMJ13DOTAZ08	1/8"	3/4	5/16"	2-1/2"
CMJ19DOTAZ08	3/16"	1	3/8"	2-3/4"
CMJ25DOTAZ08	1/4"	1-1/2	7/16"	3"
CMJ38DOTAZ08	3/8"	2-1/2	9/16"	3-1/8"
CMJ50DOTAZ08	1/2"	6-3/4	3/4"	3-3/4"

