

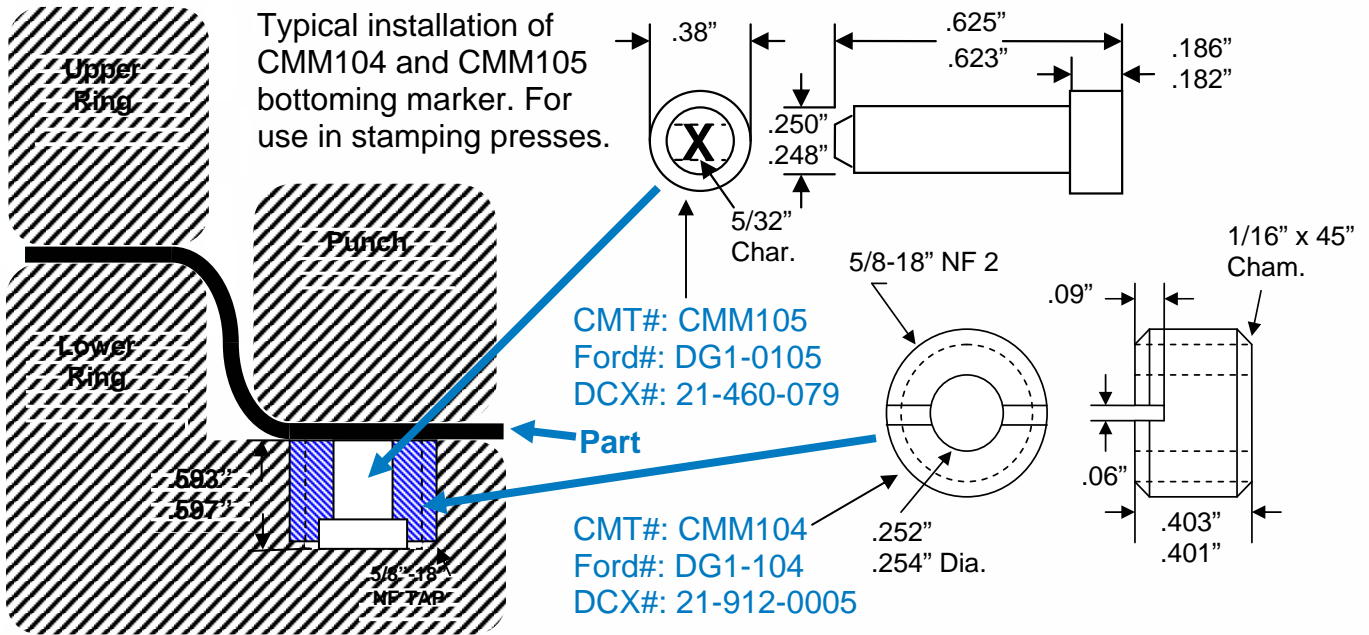
CMT

COLUMBIA
MARKING
TOOLS

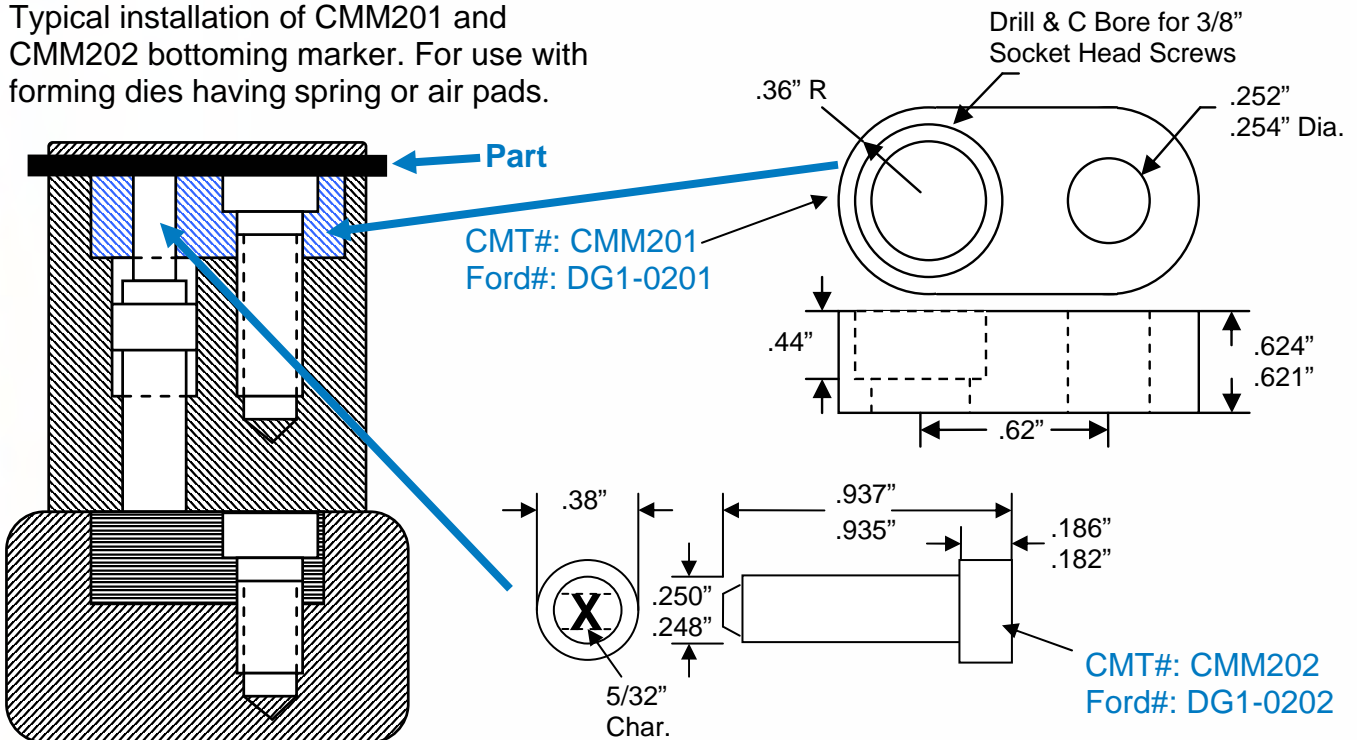


Marking
Solutions For
Stamping Dies &
Welding Stations

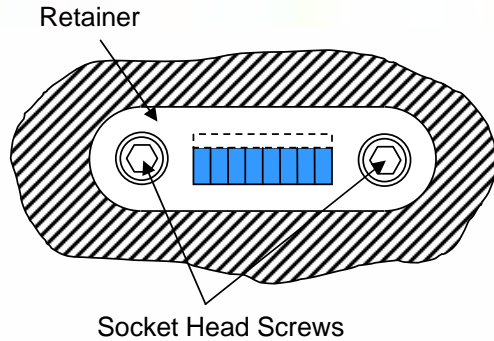
Bottoming Marker



Typical installation of CMM201 and CMM202 bottoming marker. For use with forming dies having spring or air pads.



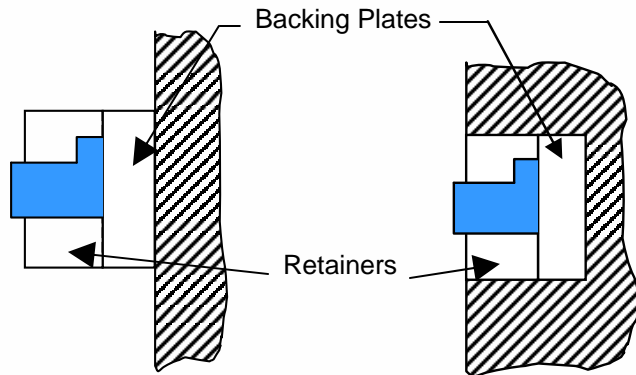
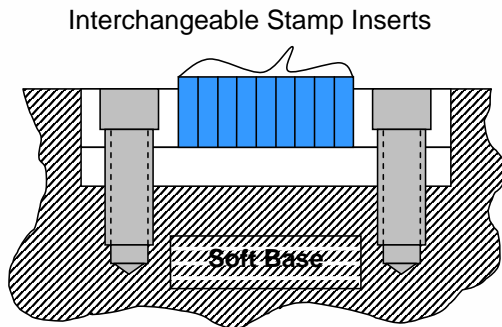
Installation



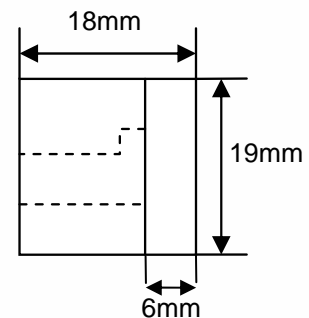
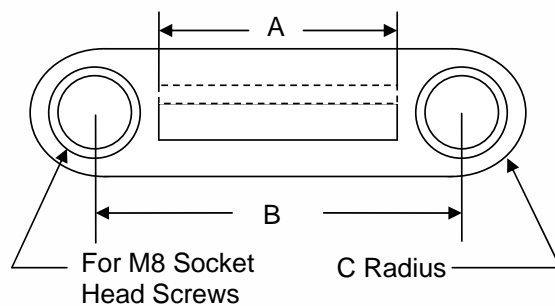
Formula For Determining Gap Width, Type Size, or Type Quantity:

Gap Width of Retainers (represented by "A" in dwgs.) ÷ Type Width * = Quantity of Type Retainer Can Hold

*Please note that type width is determined by desired character size



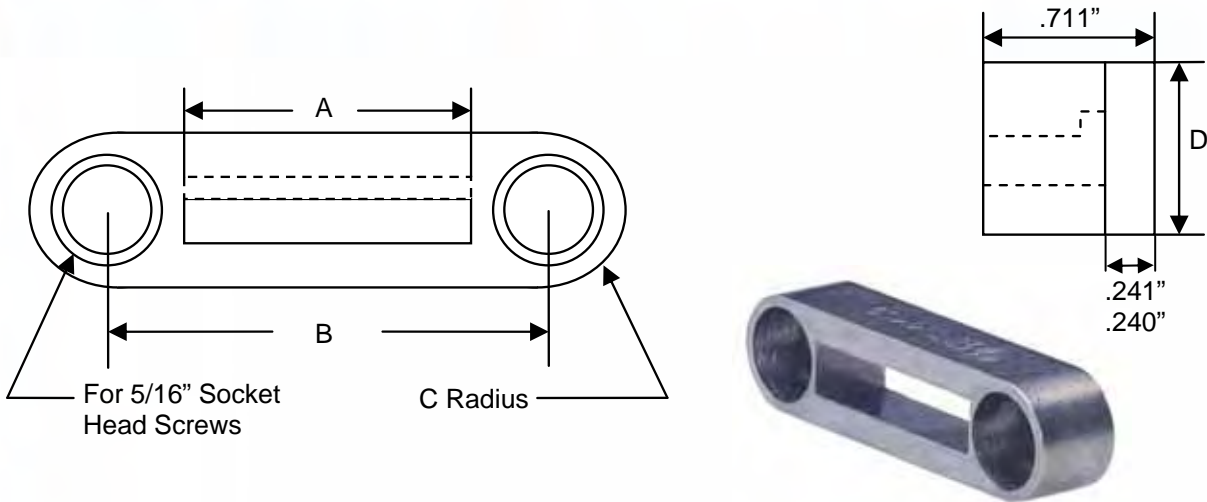
The retainer and backing plate set can be placed in a pocket or on a flat surface.



Metric Retainers for L-Shaped Type

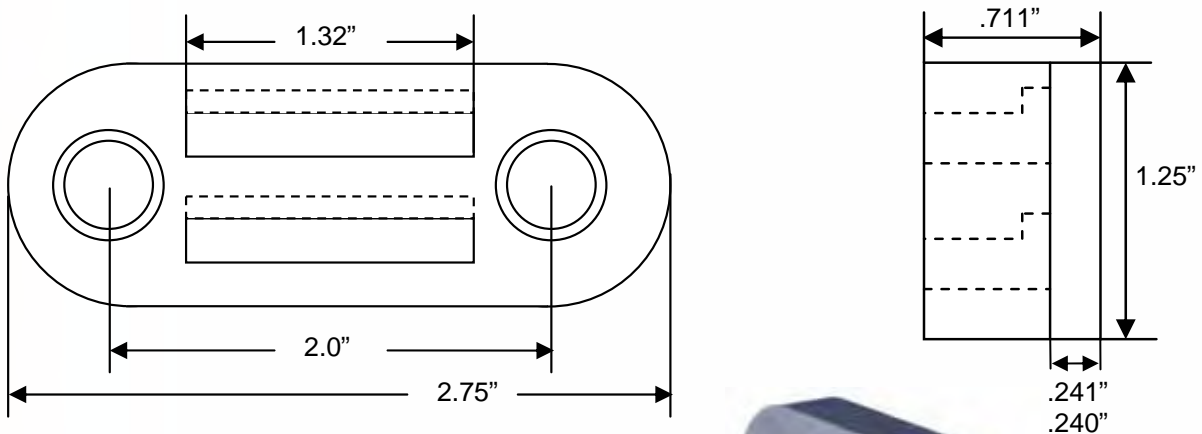
Retainer	A	B	C	Type Style (Holder Capacity)
CMMRN18R1900	40 mm	60 mm	9.5 mm	CMM018 (10)
CMMRN18R7810	48 mm	68 mm	9.5 mm	CMM018 (12)

Retainers



L-Shaped Type Retainers

Retainer	A	B	C	D	Type Style (Holder Capacity)
CMM101	1.31"	2.00"	.31"	.62"	CMM103 (7), CMM164 (8), CMM512 (8), CMM518 (8)
CMM510	1.64"	2.31"	.31"	.62"	CMM164 (10), CMM512 (10), CMM518 (10)
CMM412	2.25"	2.94"	.38"	.75"	CMM103 (12), CMM125 (18)
CMMRN18	1.10"	2.00"	.38"	.75"	CMM018 (7)

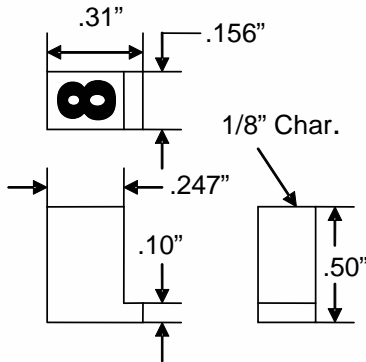


CMM106/CMM107 (retainer & backing plate set) holds (8) in each row of CMM512, CMM164, CMM518, and (7) in each row of CMM103.

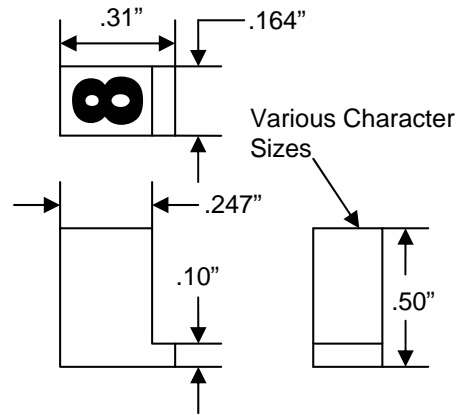
L-Shaped Type



CMM018 -1/8" character fits retainers CMMRN18, CMMRN18R1900 and CMMRN18R7810



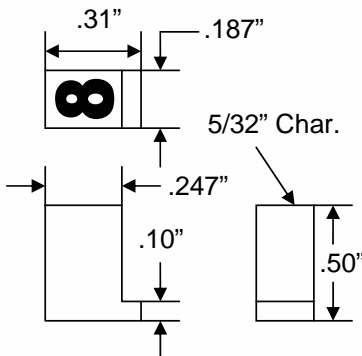
CMM518-3/16" character,
CMM164-5/32" character and
CMM512-1/8" character fits retainers
CMM101, CMM106, CMM510



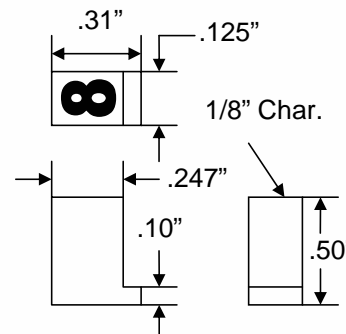
MULTI-CHARACTER SEGMENT DIES AVAILABLE

CMT can manufacture any configuration of multi-character stamps for quick and easy change over of part numbers or codes.

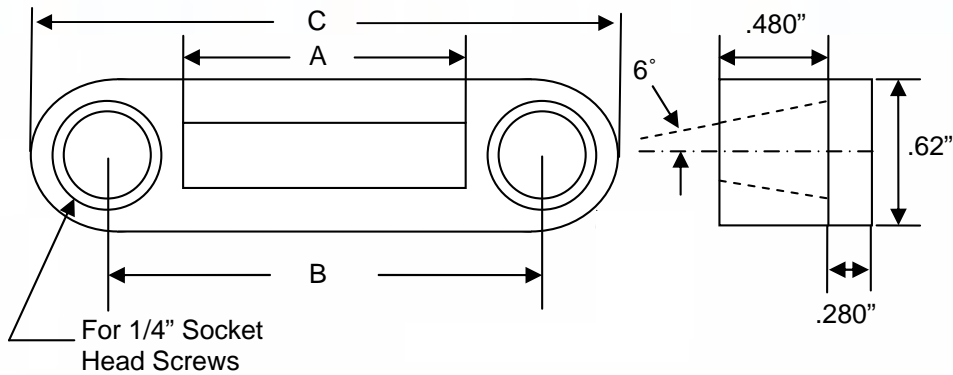
CMM103 -5/32" character fits retainers CMM101, CMM412 and CMM106



CMM125 -1/8" character fits retainers CMM412



Retainers

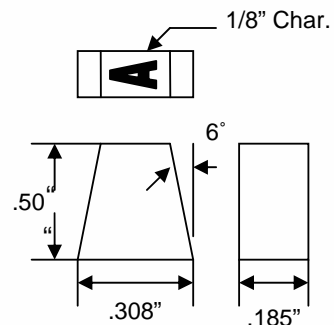


Wedge Shaped Type Retainers

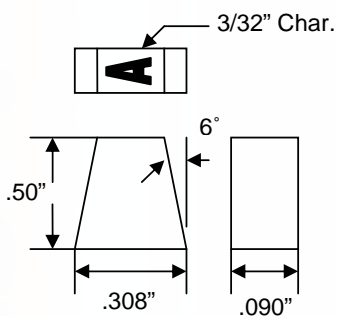
Retainer	A	B	C	Type Style (holder capacity)
CMM3	.562"	1.00"	1.50"	CMM180 (3), CMM090 (6)
CMM5	.936"	1.38"	1.88"	CMM180 (5), CMM090 (10)
CMM7	1.310"	1.75"	2.25"	CMM180 (7), CMM090 (14)
CMM9	1.683"	2.25"	2.75"	CMM180 (9), CMM090 (18)



CMM180

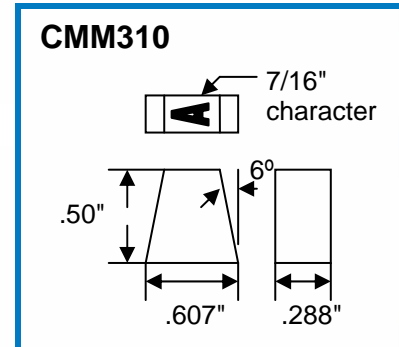
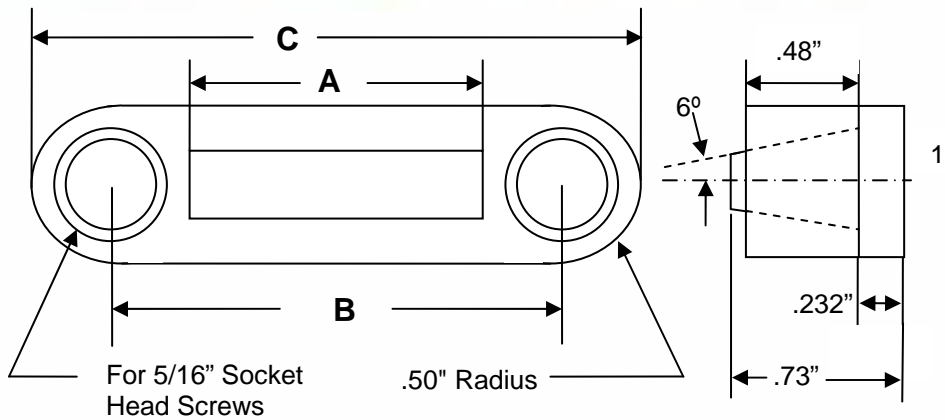


CMM090



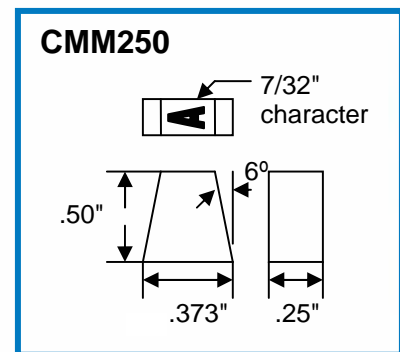
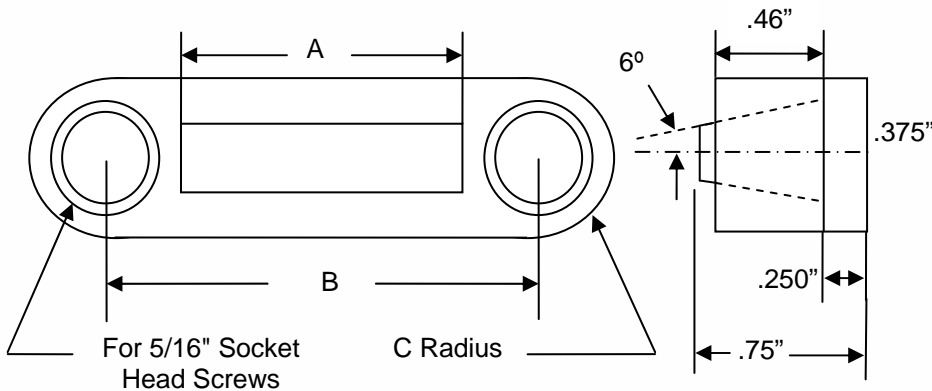
From A, B and C to your logo, CMT can engrave any marking legend onto custom die segments. For use in a stamping press or retainer system.

Retainers



Wedge Type Retainer for 7/16" Character

Retainer	A	B	C	Type Style (Holder Capacity)
CMM301	1.44"	2.00"	2.94"	CMM310 (5)
CMM306	1.73"	2.25"	3.25"	CMM310 (6)
CMM308	2.31"	3.06"	3.81"	CMM310 (8)



Wedge Type Retainer for 7/32" Character

Retainer	A	B	C	Type Style (Holder Capacity)
CMM50	1.25"	1.81"	.31"	CMM250 (5)
CMM54	2.265"	2.88"	.38"	CMM250 (9)

CMT

**COLUMBIA
MARKING
TOOLS**



Wide Range of Products:
Impact Markers
Programmable Systems
Dot-Peen & Scribe
Laser
Numbering Heads
Roll Marking Machines
Air & Hydraulic Presses
Hot Stamping Systems & Machines
Standard Type
Custom Marking Dies
Embossing Dies
Hand Tools

27430 Luckino Dr
Chesterfield MI 48047

586.949.8400
586.949.8401 fax
info@columbiamt.com

www.columbiamt.com

