

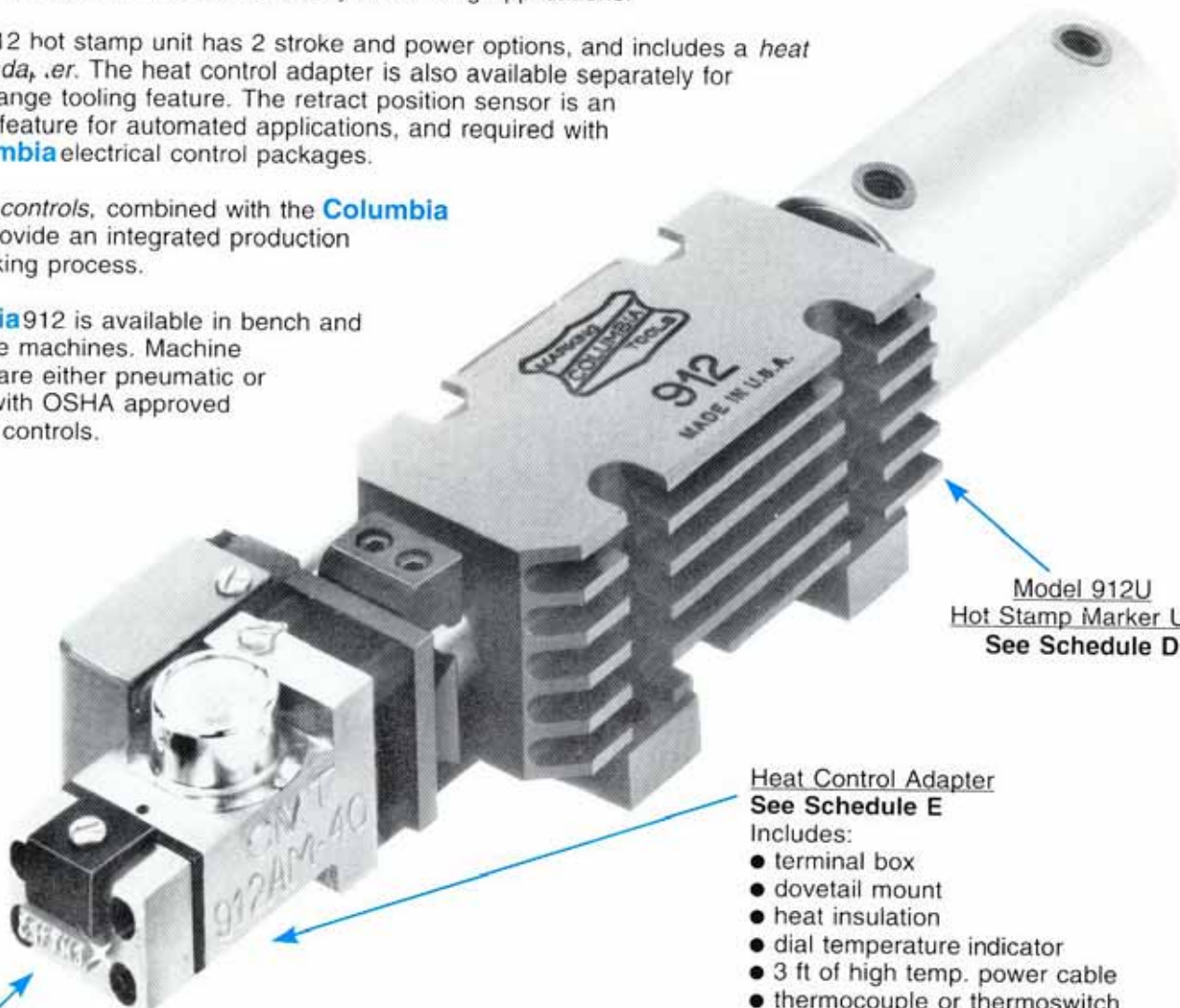
MODEL 912 HOT STAMP MARKER

The versatile **Columbia** Model 912 air operated hot stamp marker, delivering up to 360 lbs of force, is utilized in the widest variety of marking applications.

Model 912 hot stamp unit has 2 stroke and power options, and includes a *heat control adapter*. The heat control adapter is also available separately for quick-change tooling feature. The retract position sensor is an optional feature for automated applications, and required with all **Columbia** electrical control packages.

Modular controls, combined with the **Columbia** 912U, provide an integrated production line marking process.

Columbia 912 is available in bench and floor style machines. Machine controls are either pneumatic or electric with OSHA approved operator controls.



Model 912U
Hot Stamp Marker Unit
See Schedule D

Heat Control Adapter
See Schedule E

- Includes:
- terminal box
 - dovetail mount
 - heat insulation
 - dial temperature indicator
 - 3 ft of high temp. power cable
 - thermocouple or thermoswitch
 - may be ordered separately

Holder & Stamps

See Schedule F

Model 912 has 3 standard holders for CMSH step style type, and 1 standard holder for 7XH round-inserts (see page 11).

Schedule F Model 912 Std Holders & Stamp Insert Capacity								
Symbol	Character Size					Dim.		
	1/16	3/32	1/8	3/16	1/4	A	B	
912HA-75	12	8	6			0.75	0.25	
912HB-75				4		0.75	0.31	
912HC-75					3	0.75	0.38	
912HX-7	1	1	1	1	1	0.25 diam.		

Schedule E Columbia Model 912 Heat Control Adapter		
Feature	Symbol	Example
for Model 912	912A	912AJ-40
<i>Heat Sensor</i>		
J wire thermocouple monitoring*	J	
manually adjusted thermoswitch	M	
400 watt unit	40	

*for remote heat control, other thermocouples are available on request.

MODEL 912 HOT STAMP MARKER

HOW TO ORDER

To Order: Select only those symbols that represent marker feature required and place them in the sequence indicated by the example.

Schedule D Columbia Model 912 Hot Stamp Marker			
MODEL/FEATURE		Symbol	Example
Model 912 Hot Stamp		912	912BEC-J-10-03-
Automation Unit		UQQ*	
Special Design		S**	
Bench Style Machine		B__	
Floor Style Machine		F__	
<i>Machine Controls</i>			
pneumatic controls		P C	
electric controls		E C	
electric with foil feed		E F	
<i>Heat Control</i>			
with 912AJ-40 heat control		J	
with 912AM-40 heat control		M	
none		O	
<i>Stroke</i>	Dim 'C'		
1.00" max.	4.25	10	
2.00" max.	5.25	20	
<i>Power</i>	Dim 'D'		
240 lbs. force	2.25	02	
360 lbs. force (80 PSI rating)	2.75	03	
<i>Position Sensor</i>			
none		O	
retract position sensor**		R	

*automation unit is offered without controls, for modular controls (see page 10).

*special designs receive a 5 digit alphanumeric code, example 9125-A1234

^{**}2 wire, 20-250 V AC/DC proximity switch, required for CMT electrical controls.

Machine controls are either pneumatic or electric (PLC). All controls include air filter, pressure regulator, lubricator, and air shutoff valve with lockout.

PC, Pnuematic controls include:

- air dual anti-tie down anti-repeat palm buttons
- air valves
- pneumatic timer
- basic heat control (for use with thermoswitch)

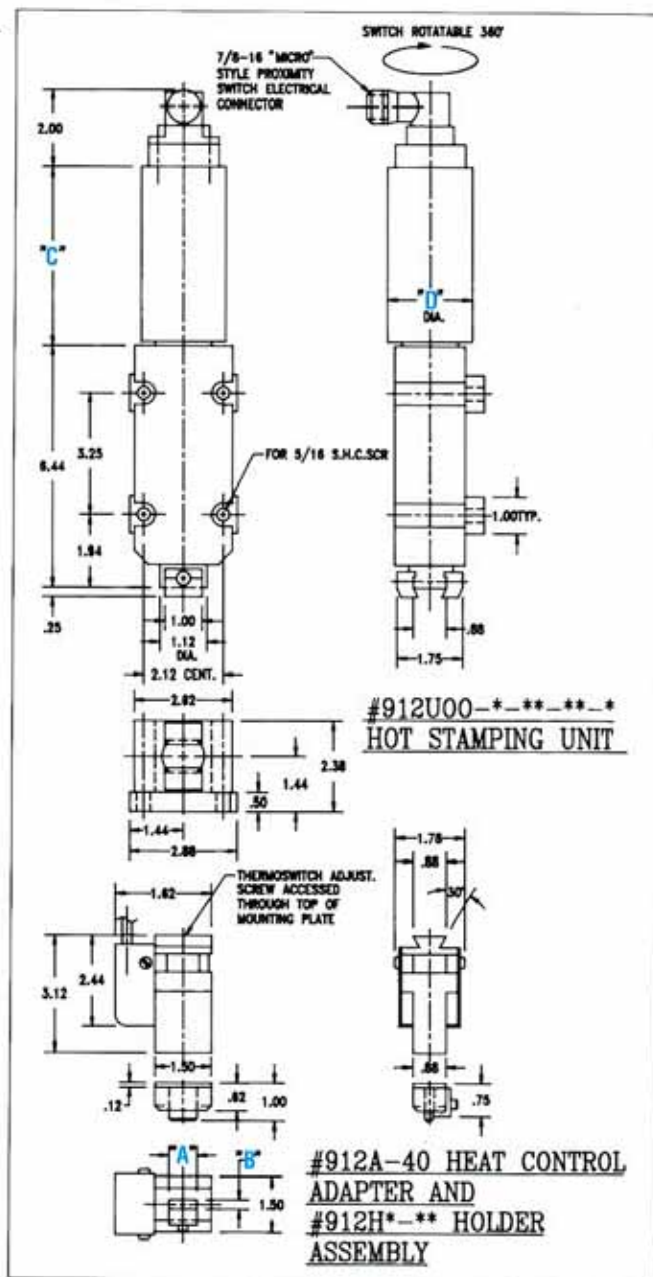
EC. Electric controls include:

- ergonomic touchless anti-tie down anti-repeat palm buttons*
- electric valves
- solid state adjustable timer
- digital remote heat control (for use with thermocouple)

In addition to the electrical control package above, **EF** includes a foil feed mechanism and controls.

*Electric palm buttons may be replaced with a part present cycle start, and pass through safety guarding

MOUNTING DIMENSIONS



For dimensions A & B see schedule F
For dimensions C & D see schedule D

Standard Specifications:

Standard Specifications:
max. ram force - 360 lbs
operating pressure - 20 to 80 psi
max. temperature - 450 degrees f
dwell time - 0 to 20 seconds
electrical requirements - 120 V AC
standard imprint area - 3/4" x 3/8"
(Larger sizes available on request)