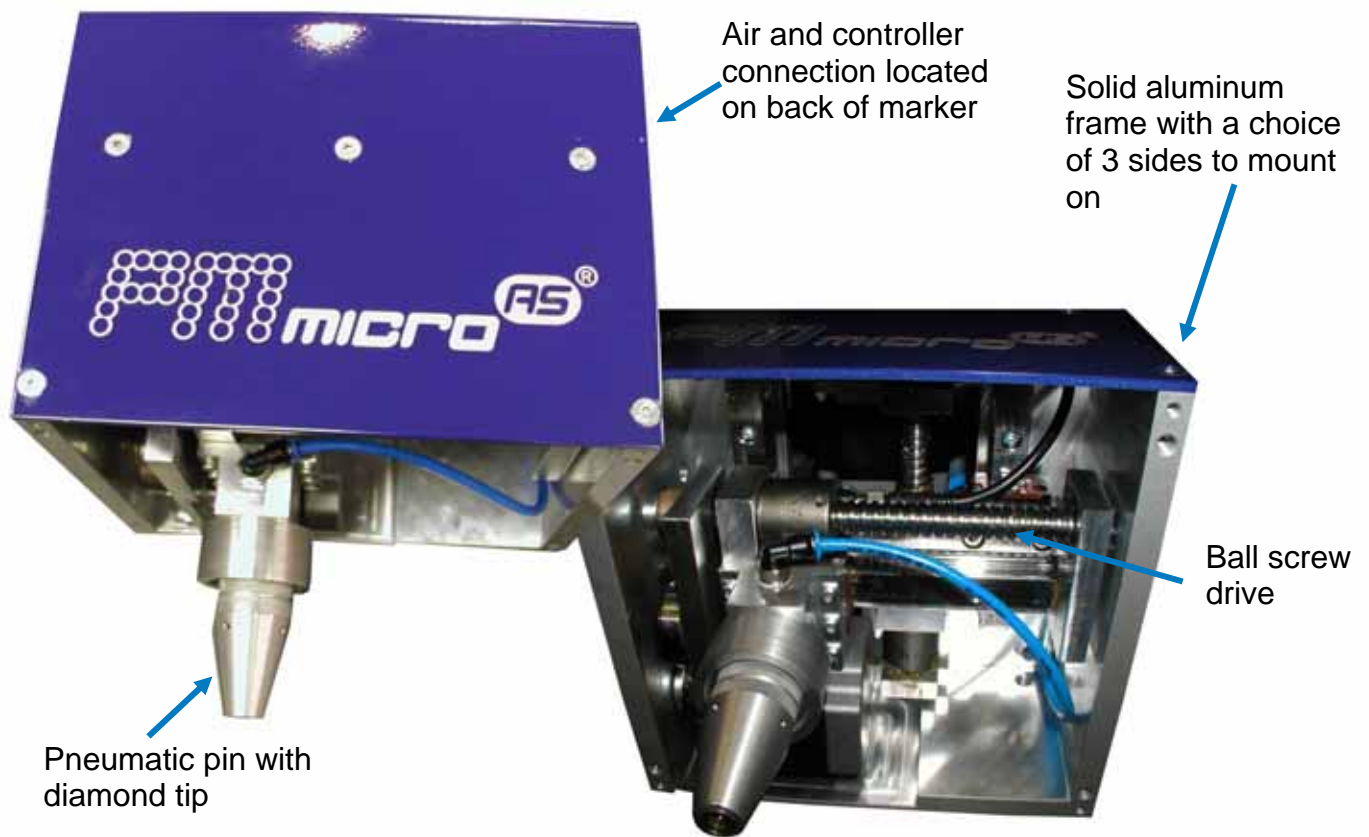


CMT Columbia Marking Tools DOT-PEEN & SCRIBE

PM Micro AS Silent Scribe

"**Silent Scribe**" version of the popular PM MICRO A. This ball screw drive system has a marking speed of 2-3 characters per second in scribe mode. The external frame is similar to the PM MICRO A and has 3 sides available for mounting. The system controller offers the flexibility of DC start and mark complete signals, as well as serial and digital I/O communication.



www.columbiamt.com

PM Micro AS Silent Scribe

PM Micro AS How to Order

To Order: Select only the symbols that represent the marker feature that is needed. Place that symbol in the sequence as shown.

Model/Feature	Symbol	Example
PM Micro AS	PMMICROAS	PMMICROAS-D-X-25
Without Shield	-	
With Shield	D	
Standard Pin	-	
Extended Pin	X	
10 ft Cable	-	
25 ft Cable	25	

Optional Software for PC*	
Standard Software	PMSOFTAS
2D Software	PMSOFTAS2D

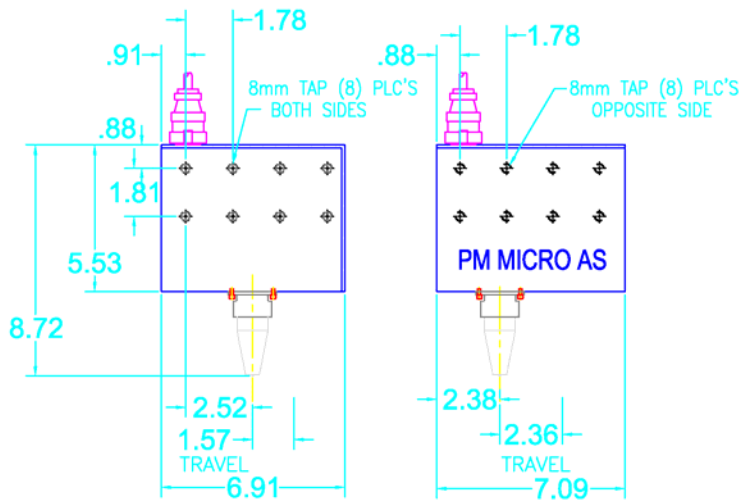
* additional options shown on page 25

Utilities:

- Electrical components require 110 VAC power, 6 ft electrical cord supplied
- Air power required for pneumatic scribe, 18mm Push-in tube fitting requires connection to air supply (30-75 PSI operating range)

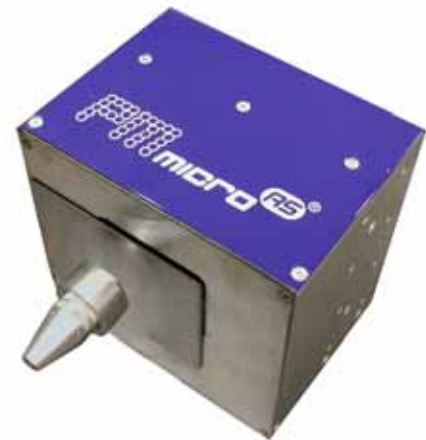
Features:

- High torque stepper motors with ball screw drive
- 2.35" x 1.59" marking window
- Marking speed of 2-3 characters per second in scribe mode
- Industrial controller (no PC required)
- LCD screen with simple menu commands
- Removable keyboard provided for programming
- 10 ft cable to connect marking head to controller
- Diamond pin included – Marks plastic, wood and metals (up to 50 RC)
- Weight of marking head assembly: 12.42 lbs



Dimensions are in inches

Unit shown with standard pin. Extended pin drawings are available upon request.



PM Micro AS shown with debris shield